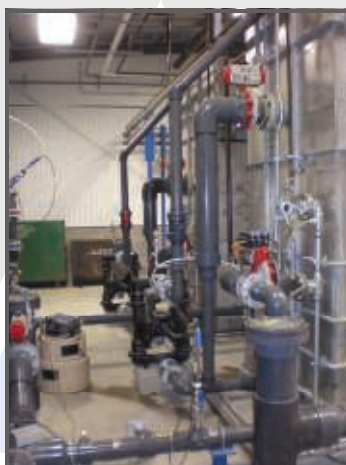


## PROJECT PROFILE: KERRY INGREDIENTS

### DESIGN BUILD AEROBIC TREATMENT PLANT

ISC constructed a new design build aerobic treatment plant for Kerry Ingredients at their existing flavorings manufacturing facility in Savannah, Georgia. The system was constructed to remove BOD, TSS and Oil/Grease using a two stage DAF system with a Moving Bed Biofilm Reactor (MBBR).



### INTEGRAL COMPONENTS

- |                                   |                                     |
|-----------------------------------|-------------------------------------|
| • Influent Pump Station           | • Chemical Feed System(s)           |
| • New Treatment Building          | • 26' x 24' MBBR Reactor Tank       |
| • Solids Screening                | • Aerated Coarse Bubble Diffusion   |
| • 32' x 28' Equalization Tank     | • Secondary Dissolved Air Flotation |
| • Aeration Mixing System          | • 15' x 18' Sludge Storage Tank     |
| • Odor Control System             | • pH Control System                 |
| • 12' Dia Diversion Tank          | • Effluent Pump Station             |
| • Primary Dissolved Air Flotation |                                     |
| • Chemical Storage Tanks          |                                     |



**"Your satisfaction is our core motivation."**